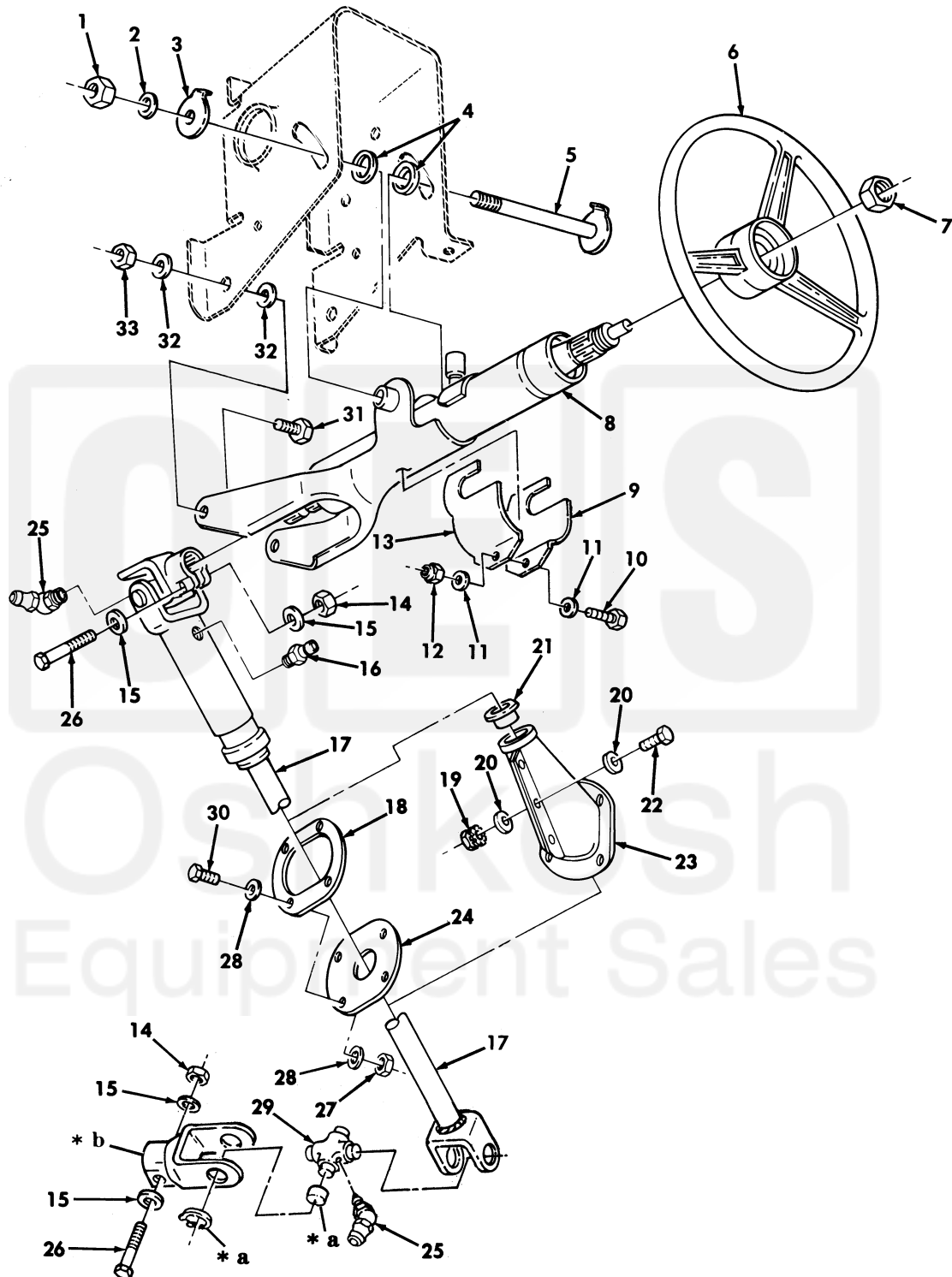


Section II.

TM 9-2320-280-24P-1



- * a PART OF ITEM 29
- * b PART OF ITEM 17

Figure 169. Steering Column, Wheel, and Intermediate Shaft.

SECTION II		TM9-2320-280-24P				
(1)	(2)	(3)	(4)	(5)	(6)	(7)
ITEM NO	SMR CODE	NSN	CAGEC	PART NUMBER	DESCRIPTION AND USABLE ON CODES(UC)	QTY
GROUP 14 STEERING						
1401 MECHANICAL STEERING GEAR ASSEMBLY						
FIG. 169 STEERING COLUMN,WHEEL,AND INTERMEDIATE SHAFT						
1	PAOZZ	5310009359021	96906	MS51943-35	NUT,SELF-LOCKING,HE 3/8-16 PART OF KIT P/N 57K3205.....	1
2	PAOZZ	5310006379541	96906	MS35338-46	WASHER,LOCK 3/8.....	1
3	PAOZZ	5310011880745	34623	5585103	WASHER,KEY PART OF KIT P/N 57K3205..	1
4	PAOZZ	5310011881093	19207	12339308	WASHER,RECESSED USE WITH STEERING GEAR P/N 1419.....	2
5	PAOZZ	5315012013592	19207	12339310	PIN,STRAIGHT,THREAD PART OF KIT P/N 57K3205.....	1
6	PAOZZ	2530014112729	19207	12446803	STEERING WHEEL.....	1
7	PAOZZ	5310001263842	19207	7063812	NUT,PLAIN,HEXAGON 5/8-18.....	1
8	PAOZZ	2530014112735	34623	12446802	HOUSING,STEERING CO PART OF KIT P/N 57K3205.....	1
9	PAOZZ	2530013835740	34623	12342875	SUPPORT,STEERING CO USBL EFF 100, 000 AND ABOVE..... UC:AVY,A11,A13,A14,A15,A20,A24,A25, A26,A27,BVY,B15,B16,B17,B18,B20,B24, B25,C17,HVY,NNN	1
10	PAOZZ	5305002253843	80204	B1821BH025C100N	SCREW,CAP,HEXAGON H 1/4-20 X 1.00, USBL EFF 100,000 AND ABOVE..... UC:AVY,A11,A13,A14,A15,A20,A24,A25, A26,A27,BVY,B15,B16,B17,B18,B20,B24, B25,C17,HVY,NNN	1
11	PAOZZ	5310008094058	96906	MS27183-10	WASHER,FLAT USBL EFF 100,000 AND ABOVE..... UC:AVY,A11,A13,A14,A15,A20,A24,A25, A26,A27,BVY,B15,B16,B17,B18,B20,B24, B25,C17,HVY,NNN	2
12	PAOZZ	5310000881251	81349	M45913/1-4CG5C	NUT,SELF-LOCKING,HE USBL EFF 100, 000 AND ABOVE..... UC:AVY,A11,A13,A14,A15,A20,A24,A25, A26,A27,BVY,B15,B16,B17,B18,B20,B24, B25,C17,HVY,NNN	1
13	PAOZZ	2530013847154	19207	12342876	SUPPORT,STEERING CO USBL EFF 100, 000 AND ABOVE..... UC:AVY,A11,A13,A14,A15,A20,A24,A25, A26,A27,BVY,B15,B16,B17,B18,B20,B24, B25,C17,HVY,NNN	1
14	PAOZZ	5310008406222	19207	8712289-4	NUT,SELF-LOCKING,HE 7/16-20.....	2
15	PAOZZ	5310008094085	96906	MS27183-16	WASHER,FLAT 7/16.....	4
16	PAOZZ	4730001720010	96906	MS15002-1	FITTING,LUBRICATION.....	1
17	PAOOO	2520012142565	78500	902-04-48-244	PROPELLER SHAFT WIT.....	1
18	PAOZZ	5365011932951	34623	5582851	SPACER,PLATE USBL EFF 1 THRU 46161. UOC:H11,H13,H14,H15,H16,H17,H18,H20, H21,H24,H25,H26,H27,H28,MMM	1
19	PAOZZ	5310009349764	96906	MS35649-205	NUT,PLAIN,HEXAGON #10-24, USBL EFF 46162 AND ABOVE.....	3